

JEUX

HOT AIR
TAPE BONDING
MACHINES | **AI Series**



AI-001

POST-BED • SEAM SEALING MACHINE WITH DIFFERENTIAL SPEED • MEMORY FUNCTION & 3D ELECTRONIC NOZZLE POSITIONING SYSTEM

JEUX AI-001 machine is equipped with 3D electronic nozzle positioning system, which allows to control the nozzle position digitally from the panel in 3-axis.

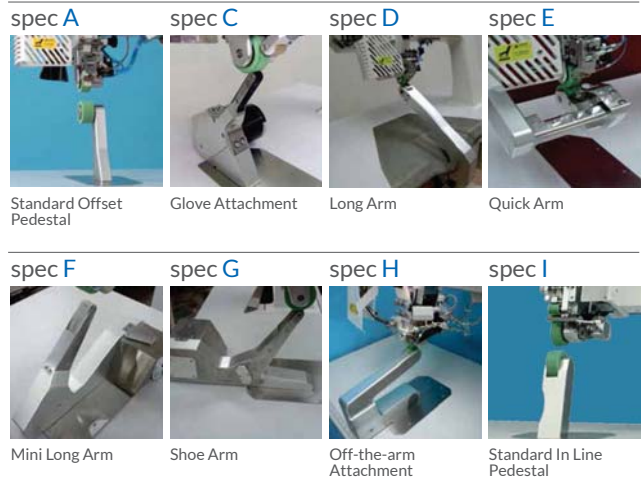


KEY FEATURES

- 3D Electronic Nozzle Positioning System
- Memory Function – up to 29 different profiles
- Differential Speed Top/Bottom Roller
- Variable Speed Nozzle Positioning
- Digital Tape Feeder (Tape Tension Control)
- Multi-Language Software



POSSIBLE SPECIFICATIONS

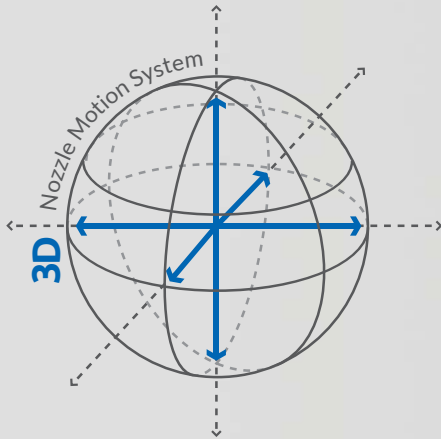


MODEL NAME	JEUX-AI-001
Power Supply	AC 220 V 50/60 Hz, 1Φ
Heater Power	3600 W
Compressed Air	>0.4 MPa
Maximum Sealing Speed	18 m/min.
Maximum Temperature	800°C
Nozzle Unit	22 mm
Upper Roller Width	25.4 mm
Lower Roller Width	31 mm
Dimensions	1200 x 750 x 1800 mm (LxWxH)
Net Weight	150 kg
Optional Roller	8-30 mm

AI-101-IRJ

POST-BED • SEAM SEALING MACHINE WITH DIFFERENTIAL SPEED • MEMORY FUNCTION • 3D ELECTRONIC NOZZLE POSITIONING SYSTEM & TAPE HEATING TEMPERATURE CONTROLLER

JEUX AI-101 with 3D electronic nozzle positioning system can additionally be equipped with Tape Heating Temperature Sensor, which ensures that the temperature of the tape is stable and eliminates the risk of tape overheating. Big arm (56 cm x 37 cm) and 4,5" color panel ensure comfort and better workability for the operator.

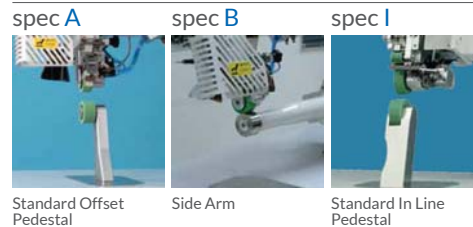


KEY FEATURES

- 3D Electronic Nozzle Positioning System
- Tape Heating Temperature Sensor
- Differential Speed Top/Bottom Roller
- Variable Speed Nozzle Positioning
- Color Touch Screen Interface
- Digital Tape Feeder (Tape Tension Control)
- Multi-Language Software



POSSIBLE SPECIFICATIONS



MODEL NAME	JEUX-AI-101-IRJ
Power Supply	AC 220 V 50/60 Hz, 1Φ
Heater Power	3600 W
Compressed Air	>0.4 MPa
Maximum Sealing Speed	18 m/min.
Maximum Temperature	800°C
Nozzle Unit	22 mm
Upper Roller Width	25.4 mm
Lower Roller Width	31 mm
Dimensions	1200 x 680 x 1800 mm (LxWxH)
Net Weight	160 kg
Optional Roller	8-30 mm

KEY FEATURES

- Differential Speed Top/Bottom Roller
- Digital Tape Feeder (Tape Tension Control)
- Colour Touch Screen Display
- Three Different Post Types Possible
- Digital Pressure Display



POSSIBLE SPECIFICATIONS

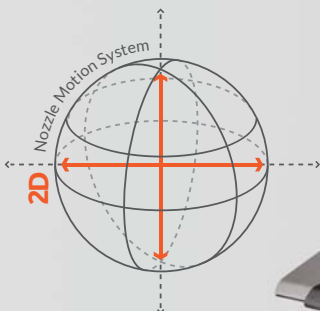


MODEL NAME	JEUX-AI-107
Power Supply	AC 220 V 50/60 Hz, 1Φ
Heater Power	3600 W
Compressed Air	>0.4 MPa
Maximum Sealing Speed	18 m/min.
Maximum Temperature	800°C
Nozzle Unit	22 mm
Upper Roller Width	25.4 mm
Lower Roller Width	31 mm
Dimensions	1200 x 750 x 1800 mm (LxWxH)
Net Weight	150 kg
Optional Roller	8-30 mm

AI-107

POST-BED • SEAM SEALING MACHINE
WITH DIFFERENTIAL SPEED

JEUX AI-107 is a medium-range machine equipped with 2-axis electronic nozzle positioning system, which allows to adjust from the panel the distance between the nozzle and the rollers.



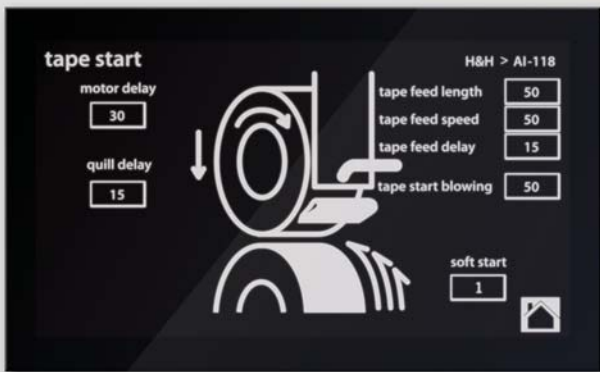
Displayed model code:
AI-107 spec D-NNN



Displayed model code:
AI-107 spec A-NNN

AI-118 | HOT AIR SEALING MACHINE

JEUX AI-118 is an economical and simple hot air sealing machine for any seam sealing operation, equipped with functional colour touch screen and differential speed of top and bottom rollers, assuring good performance on difficult materials and curvy shapes.



Easy Settings Adjustment on Big Panel

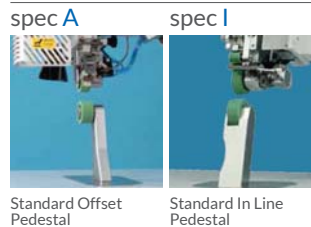


KEY FEATURES

- Affordable Price
- Digital Tape Feeder (Tape Tension Control)
- Differential Speed Top/Bottom Roller
- Digital Air Pressure Display
- Color Touch Screen Interface
- Multi-Language Software
- USB Port



POSSIBLE SPECIFICATIONS

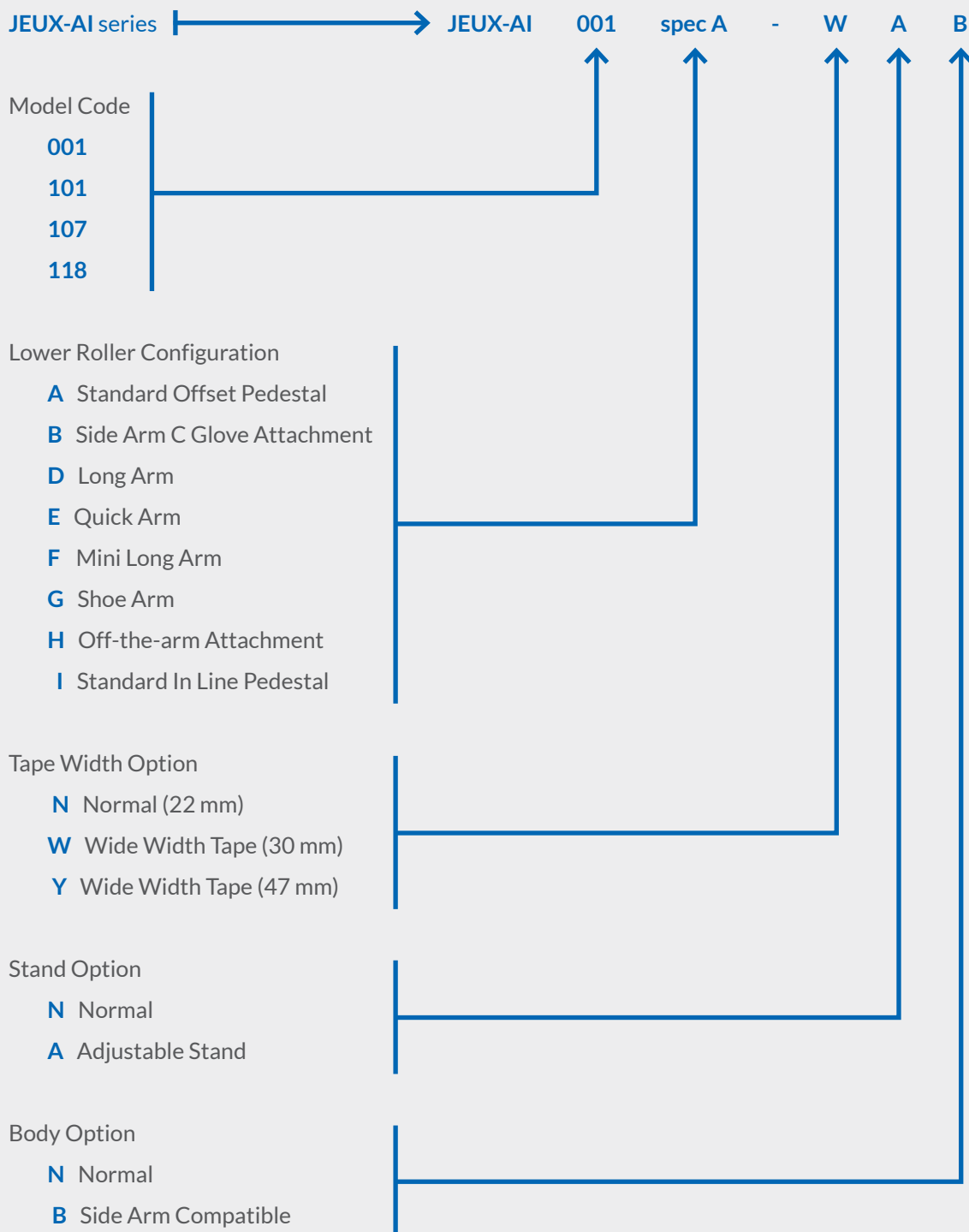


MODEL NAME	JEUX-AI-118
Power Supply	AC 220 V 50/60 Hz, 1Φ
Heater Power	3600 W
Compressed Air	>0.4 MPa
Maximum Sealing Speed	24 m/min.
Maximum Temperature	800°C
Nozzle Unit	22 mm
Upper Roller Width	25.4 mm
Lower Roller Width	31 mm
Dimensions	1200 x 750 x 1700 mm (LxWxH)
Net Weight	130 kg
Optional Roller	10-31 mm



HOT AIR
TAPE BONDING
MACHINES | AI Series

Selection Guide for JEUX-AI-Series



CLASSIFIED

	ITEM	JEUX-AI-001	JEUX-AI-101	JEUX-AI-107	JEUX-AI-118
Features	Power Save Mode	•	•	•	•
	Heat Press Mode	•	•	•	•
	Start/stop Seal Skip Prevention	•	•	•	•
	Auto Micro Reverse	•	•	•	•
	Individual Program for Start/Middle/End	•	•	•	•
	Error Message	•	•	•	•
	Working Lamp	•	•	•	•
	USB Disk		•		•
	Real Time Variable Speed Sealing	•			
	Production Statistics	•	•	•	•
	Real Time Clock	•	•		•
	Roller Cooler	•	•	•	•
	Temporary Stop Pressure Release	•			
	Fix Length Mode	•	•	•	•
Digital Pressure Indication		•	•	•	
Control	Multi-function Foot Switch	•	•	•	
	Control Pedal Number	2	2	2	3
	Password Protection	•	•	•	•
	Touch Panel Control	•	•	•	•
	No. of Memory	30	40		5
	No. of Parameter	35	44	28	21
	Parameter Lock	•	•	•	•
	Key Lock		•		•
	No. of Controller	2	1	1	1
	Temperature Deviation (°C)	1	1	1	1
Emulation Mode				•	
Nozzle	Movement Type	Digital Motor	Digital Motor	Pneumatic	Pneumatic
	Position Adjustment Type	Digital Motor	Digital Motor	Mechanical	Mechanical
	Movement Dimensions	3 Axis	3 Axis	2 Axis	1 Axis
	Angle Adjustment	•	•	•	•
	Digital In/Out Timing Adjustment	•	•		
	Oscillation Mode	•	•		
	Parking Position	•	•	•	
	Hovering Position	•	•	•	
Soft Landing Movement	•	•			
Cutter	Calibration Mode	•	•		
	Hand Cut Mode	•	•	•	•
	Foot Cut Mode	•	•	•	•
Transmission	Precision Digital Tape Feeder	•	•	•	•
	No. of Motor	7	6	3	3
	Speed Control	Digital	Digital	Digital	Digital
	Tolerance	<1%	<1%	<1%	<1%
Construction	Changeable Bottom Roller Diameter	•	•		
	Differential Speed Top/Bottom Motor	•	•	•	•
	Manual Reverse Rotation	•	•	•	•
	Slant Body	•	•	•	•
Lower Roller Configuration	Body Type	Sheet Metal	Sheet Metal	Sheet Metal	Sheet Metal
	Spec A - Standard Offset Pedestal	•	•	•	•
	Spec B - Side Arm	•	•		
	Spec C - Glove Attachment	•	•		
	Spec D - Long Arm	•	•	•	
	Spec E - Quick Arm	•	•		
	Spec F - Mini Long Arm	•	•		
	Spec G - Shoe Arm	•	•		
	Spec H - Off-the-arm Attachment	•	•		
	Spec I - Standard In Line Pedestal			•	•
Option	Wide Width Tape (30 mm)	•	•		
	Adjustable Stand	•			
	Side Arm Compatible	•	•		
	Seam Allowance Guide	•	•	•	
	Narrow Tape Guide	•	•	•	

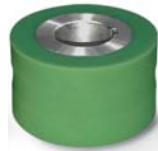
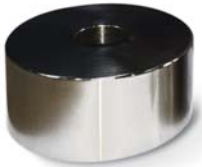
JEUX

Optional Items

NOZZLES



ROLLERS



TAPES



Your Notes

JUKI Non-sewing Laboratory

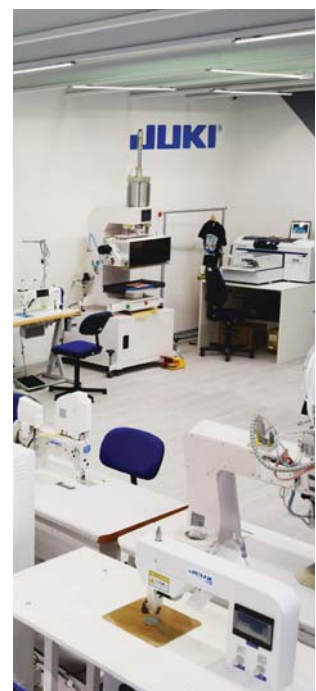


JUKI CENTRAL EUROPE WOULD LIKE TO INVITE YOU TO OUR NEW NON-SEWING SHOW ROOM!

The specialized showroom is a one-stop shop for all the new bonding, welding, press and industrial printing machines Juki Central Europe is now able to offer.

Now that the full range of solutions set up and available to use **in one place** it is the perfect place for you to test out the machines and see what they can do to give an edge to your production process. We have our resident experts on hand to provide detailed explanation and training you can be sure that a visit will be as valuable as possible.

With these solutions testing your materials is key and we are able to perform these tests ahead of time again ensuring you will get the most out of your visit.



AI Series

JUKI

For ordering, please contact
JCE or your local distributor.

JUKI CENTRAL EUROPE Sp. z o.o.
ul. Poleczki 21 / Platan Park C
02-822 Warsaw, Poland

www.jukieurope.com