

Automated Nesting Software



ACCUNEST™ SOFTWARE EMPLOYS POWERFUL ALGORITHMS TO ANALYZE MULTIPLE NESTING SOLUTIONS AND DELIVER THE ONE WITH THE HIGHEST MATERIAL UTILIZATION. IT DRAMATICALLY ACCELERATES THE MARKER MAKING PROCESS AND REDUCES LABOR COSTS. THE SOFTWARE OFFERS AN ADVANTAGE TO BUSINESSES OF ALL SIZES THAT ARE EAGER TO REDUCE MATERIAL COSTS BY MAKING MORE EFFICIENT SAMPLE, COSTING AND PRODUCTION MARKERS.

NOW, ACCUNEST SOFTWARE IS AVAILABLE WITH TWO LEVELS OF COMPUTING POWER:

ACCUNEST PROFESSIONAL EDITION (PE) EMPLOYS SINGLE-CORE COMPUTING TECHNOLOGY TO ANALYZE MULTIPLE ALGORITHMS AND DELIVER THE OPTIMAL MARKER STRATEGY WITHOUT HUMAN INTERVENTION.

ACCUNEST MULTI-CORE (MC) HARNESSSES THE POWER OF MULTIPLE COMPUTER PROCESSORS TO AUTOMATICALLY GENERATE MARKERS THAT DELIVER UP TO 1 PERCENT BETTER MATERIAL UTILIZATION THAN SINGLE-CORE COMPUTING.

Accelerate marker making.

- Automatically nests costing and production markers to generate material utilization figures quickly and accurately.
- Creates markers automatically for stripe and plaid materials, respecting piece constraints and matching lines.
- Automatically completes partially laid markers – the operator has the flexibility to control the placement of critical parts and allows the system to nest remaining parts.
- Apply pre-marking rules in nesting to capture manual piece layouts allowing for more complex markers to be automatically nested.

Increase profitability.

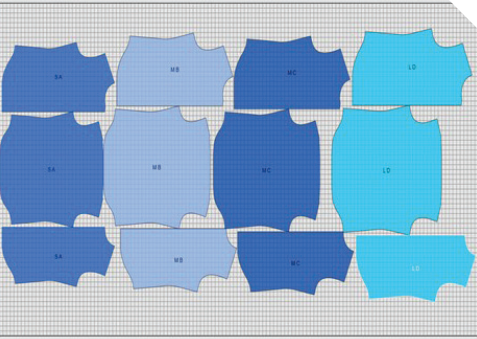
- Respects all material constraints applied to pieces such as directional rotation, tilt allowances and spread constraints to ensure quality and minimize costly mistakes in the cutting room.
- Groups pieces by size or bundle into sections to maintain proximity of pieces in the marker for shade variations.
- Take advantage of unattended overnight processing to respond to

peak demands without additional labor charges.

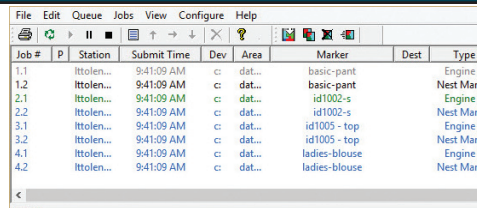
- Uphold brand and product quality by predefining unusable areas of the material to avoid nesting on material defects.

Improve job management using UltraQueue.

- Included UltraQueue™ software allows you to submit markers from AccuMark® workstations to a holding queue for processing. Identify jobs in the queue for at-a-glance comparison of process times, marker lengths and yields.
- Provides off-line processing to optimize marker making time.
- Marker Viewer displays yardage and yields without the need for a marker making license.
- Color-coded management view of all work in process and completed jobs allows users to see at a glance which markers are in what stages without having to open every marker being created or run a job report.
- Export job queue to CSV file for reporting and administration.



Take advantage of your computer's multiple processors to maximize material utilization using AccuNest Multi-Core software.



Reduce labor costs by queuing jobs and nesting markers 24/7.

NOTE: Configurations vary according to options selected. Specifications are subject to change without notice.

AccuNest, AccuMark and UltraQueue are trademarks or registered trademarks of Gerber Technology LLC.

Windows is a registered trademark of Microsoft Corporation.

Intel Core is a registered trademark of Intel Corp. and its subsidiaries.

All other trademarks or registered trademarks are the property of their respective owners.

Gerber Technology
24 Industrial Park Road West
Tolland, CT 06084 USA

TOLL FREE (USA)
800.826.3243

TELEPHONE (International)
+1.860.871.8082

www.gerbertechnology.com

Form No. 01102017

Seamless integration.

- Fully integrated with AccuMark and AccuMark batch processing functionality that accesses orders from an ERP system and processes them through to cutting without human intervention.
- Import model, piece and marker data from most common apparel CAD packages to generate or re-nest markers.
- Full access to standard and SQL storage areas over LAN or WAN for flexible storage.

AccuNest may be added to an existing AccuMark software seat. The existing AccuMark software license must be updated to add AccuNest functionality. AccuNest can be installed on a PC without AccuMark software installed and it must be networked to at least one AccuMark system.

AccuNest Professional Edition (PE)

System Requirements:

AccuNest PE is compatible with AccuMark version 8.5 and higher.

	Minimum	Recommended
Processor Speed	Quad Core 3.3GHz	Intel® Core™ i5
Hard Disk Capacity	20+ GB	250 GB
Memory	2 GB	4 GB
Ports	USB	
Service Packs	Current	

AccuNest Multi-Core (MC)

System Requirements:

AccuNest MC is compatible with AccuMark version 9.0 and higher.

	Minimum	Recommended	Optimal
Processor Speed	Intel Core i7	16 Core Server	32 Core Server
Hard Disk Capacity	250+ GB	250+ GB	250+ GB
Memory	8 GB	16+ GB	16+ GB
Ports	USB		
Service Packs	Current		

Supported Operating Systems:

As of version 10.0: Windows 8.1 Professional and Enterprise 32-bit & 64-bit

As of version 10.1: Windows 10 Professional and Enterprise 32-bit & 64-bit