

AccuMark[®] Made-to-Measure

IN AN ENVIRONMENT WHERE ITEMS ARE CUSTOM MADE TO AN INDIVIDUAL'S UNIQUE STYLE AND MEASUREMENTS, IT'S IMPORTANT TO PROVIDE THE PERFECT FIT GARMENT AS QUICKLY AS POSSIBLE.

GERBER'S ACCUMARK MADE-TO-MEASURE (MTM) MEETS THE COMPLEX NEEDS OF THE TAILORED CLOTHING INDUSTRY. IT IS THE ONLY SOFTWARE SOLUTION THAT PROVIDES TRUE AUTOMATION FROM PATTERN MODIFICATION THROUGH ADVANCED RULE-BASED SPECIFICATIONS AND ORDER CREATION.

Create custom orders for a perfect fit.

Maximize throughput of highly-tailored garments.

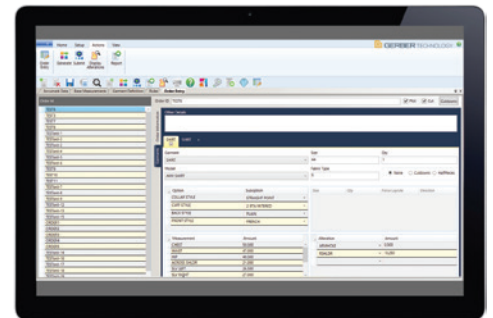
- Alters model based on an individual's style choices and measurements.
- Can use measurements derived from high-tech 3D body scanners or low-tech tape measures.
- Creates AccuMark orders, models and size codes based on unique customer requirements.
- Features a customizable database to meet your unique product requirements and maximize throughput without need for additional personnel.

Simplify your business processes.

- Provides information management tools for querying orders by customer name or any other order detail.
- Expert software decreases reliance on highly-skilled operators.
- Imports order information from various sources, including ERP systems and web pages.

Reduce time to market.

- Automates order selection and decision making using powerful knowledge-based rules.
- Automates the "blue pencil" alterations.
- Batch processing of work automates and expedites work in progress.
- Generates and exports cut data automatically.
- Combines with AccuNest™ for automated marker making to maximize productivity and material savings.



Optional Hardware Components

- 3D body scanner

Required Software Components

- AccuMark - pattern design, grading, marker making and production planning software
- Batch Processing - automates order, plot and cut generation

Optional Software Components

- AccuNest - automatic marker making software

Language Support

- English, Chinese, Spanish, French, Italian, German, Dutch, Finnish, Polish, Portuguese, Russian, Serbian, Korean, and Turkish

Supported Operating Systems

- As of version 10.0: Windows® 8.1 Professional and Enterprise 64-bit

System Requirements:

	Minimum	Recommended
Processor Speed	Intel® Core™ i-5 -3550S 3.7 GHz or higher	Intel Core 2400 3.1 GHz or higher
Hard Disk Capacity	120+ GB	240+ GB (SSD)
Memory	8+ GB	16+ GB
Ports	USB	USB
Service Packs	Current	Current

NOTE: Configurations vary according to options selected. Specifications are subject to change without notice.

AccuMark and AccuNest are trademarks or registered trademarks of Gerber Technology LLC. Intel Core i5 are trademarks or registered trademarks of Intel Corp. and its subsidiaries. Windows is a registered trademark of Microsoft Corporation.

© 2019 Gerber Technology LLC.
All rights reserved.

Gerber Technology
24 Industrial Park Road West
Tolland, CT 06084 USA

TOLL FREE (USA)
800.826.3243

TELEPHONE (International)
+1.860.871.8082

www.gerbertechnology.com
www.gerbersoftware.com

Form No. 09102019