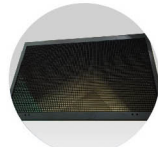
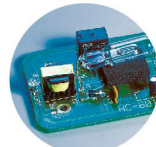


## Optional Items

Pass-through Door  
Switch ModuleGrid Cutting Table /  
Honeycomb TableRotary Attachment /  
Rotary ChuckSmartGUARD™ Fire  
Alarm (Patented)

Air Compressor Unit

Multi-purpose Integrated  
SmartBOX™External Control  
Interface Board

Fume Extraction System



External Signal Indicator

| Specification                 |                  | Spirit GLS Hybrid   |               |   |
|-------------------------------|------------------|---|---------------|---|
| Model                         |                  | Hybrid CO <sub>2</sub>  | Hybrid Fiber  | Hybrid Dual                               |
| Work Area                     |                  | 34 x 24 in. (860 x 610 mm) Extendable to 38 x 24 in. (960 x 610 mm)   |               |   |
| Max. Part Size<br>(L x W x H) | All doors closed | 39 x 25 x 7 in. (990 x 635 x 177 mm)  |               |   |
|                               | All doors open   | 39 x ∞ x 7 in. (990 x ∞ x 177 mm)   |               |   |
| Table Size                    |                  | 40.3 x 27.7 in. (1025 x 705 mm)   |               |   |
| Dimensions                    |                  | 53.7 x 34.6 x 39.7 in. (1365 x 880 x 1010 mm)   |               |   |
| Laser Source                  |                  | 10.6-μm CO <sub>2</sub> laser   | Fiber laser   | 10.6-μm CO <sub>2</sub> laser: 30 to 100W |
|                               |                  | 30~100W   | 20 / 30 / 60W | Fiber laser: 20 / 30 / 60W                |
| Cooling                       |                  | Air-cooled, Operating environment temperature 15°- 30°C (60°- 86°F)   |               |   |
| Drive                         |                  | Closed-loop DC servo control  |               |   |
| Maximum Speed*                |                  | 80 IPS  |               |   |
| Speed Control                 |                  | Adjustable from 0.1-100% (Up to 16 color-linked speed settings per job)   |               |   |
| Power Control                 |                  | Adjustable from 0-100% (Up to 16 color-linked power settings per job)   |               |   |
| Engraving Capability          |                  | 256-level grayscale image processing capability   |               |   |
| Distance Accuracy             |                  | 0.254 mm or 0.1% of move, whichever is greater  |               |   |
| Z-Axis Movement               |                  | Automatic   |               |   |
| Focus Lens                    |                  | Standard 2.0" (Optional 3.0" & 4.0")  |               |   |
| Resolution (DPI)              |                  | Available 125, 250, 300, 380, 500, 600, 760, 1000, 1500   |               |   |
| Interface                     |                  | 10 Base-T Ethernet<br>USB Type-A 2.0 – For USB storage (Max. 32GB capacity, FAT file system)<br>USB Type-B 2.0 – For connecting with the computer   |               |   |
| Compatible Operating Systems  |                  | MS Windows  |               |   |
| Display Panel                 |                  | 4-line LCD display showing current file name, total working time, laser power, engraving speed, file(s) loaded into memory buffer, setup and diagnostic menus   |               |   |
| Safety                        |                  | Class I Laser Product Compliant with EN60825<br>Class 3R Laser Product Compliant with CDRH<br>2006/42/EC Machinery Directive Compliance<br>Class 4 Laser Product Compliant with CDRH with the optional pass-through door module |               |   |
| Operation Voltage             |                  | Below 80Watt, 100-240VAC, 50/60HZ Auto Switching, max. 15A<br>80Watt and above, 200-240VAC, 50/60HZ Auto Switching, max. 15A  |               |   |
| Fume Exhaust System           |                  | External exhaust system with minimum flow rate 800m <sup>3</sup> /h (CFM 471 ft <sup>3</sup> /h) is required,<br>2.3kPA negative pressure (Pure-Air PA-1500FS @ 4" exhaust port)  |               |   |

\* Speed does not equal to throughput. See dealer or visit [www.GCCworld.com](http://www.GCCworld.com) for more details.

△ Specifications are subject to change without prior notice.

\*\*\*Please use certified brands by GCC for LaserPro USB storage, kindly refer to GCC User Manuals for more details. Authorized Dealer


[www.GCCworld.com](http://www.GCCworld.com)

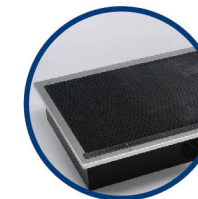
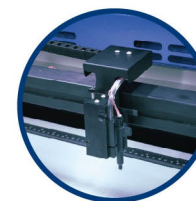

GCC Headquarters 4F-1, No.236, Fude 2nd Rd., Xizhi Dist., New Taipei City 22151, Taiwan 886-2-6616-6692 Fax : 886-2-2694-6875  
 GCC China No.1, Chen Feng Road, Yushan, Kunshan, Jiangsu 215300, China 86-512-5726-1515 Fax : 86-512-5726-1518  
 GCC Europe B.V. Eglantierbaan 43-45, 2908 LV, Capelle a/d IJssel, The Netherlands 31-10-458-9367  
 GCC America, Inc 20453 E Valley Blvd. Walnut, CA 91789, USA 1-909-718-0248 Fax : 1-909-718-0251  
 US & Canada Only Toll Free: 1-888-284-5211



## Laser Engraver

The Epitome of Excellence &amp; Flexibility

GCC LaserPro

**Spirit GLS Hybrid**Upgrade your business with CO<sub>2</sub> & Fiber hybrid laser technology**Spirit GLS Hybrid**

- 38" x 24" (960 mm x 610 mm) extra large working area
- CO<sub>2</sub> and Fiber dual lasers hybridized in one laser system
- QSM (Quality Speed Mode) maintains 100% engraving quality while operating at maximum speed
- Patented SmartACT™ motion control technology increases your productivity by reducing ramping process and job running time
- Drag N Play feature assures remarkably easy and fast set-ups
- High speed DC servo motor for precise and rapid movement of the laser carriage
- Reliable DuraGuide motion system with reinforced Kevlar belt delivers superb output quality
- LED light modules illuminate the working area



PCB

3D Engrave

2 Ply Plastic

Stone / Tile

Acrylic

Leather & Metal

Fabrics

Laser Engraver

# GCC LaserPro Spirit GLS Hybrid



## GCC LaserPro Spirit GLS Hybrid

The LaserPro Spirit GLS Hybrid is the flagship model of the award winning LaserPro Spirit line of laser engravers. In succession to GCC LaserPro worldwide accolades features, Spirit GLS Hybrid further upscale its capability to CO<sub>2</sub> & Fiber Hybrid laser option in one system, engraving, cutting, marking on organic and metal pieces all possible now.

### CO<sub>2</sub> & Fiber Hybrid Lasers

GCC Hybrid technology allows to install CO<sub>2</sub> & Fiber dual lasers in one system to expand your business from organic materials processing to direct metal engraving.



### Pass-through Front and Rear Doors (Optional)

Optional front and rear door design enables loading of extremely long working pieces.

### DuraGuide

Systematic and reliable motion system embedded with strong mechanical framework, reinforced Kevlar belts, and accurate servomotor control technology to deliver superb output quality under rapid movement.

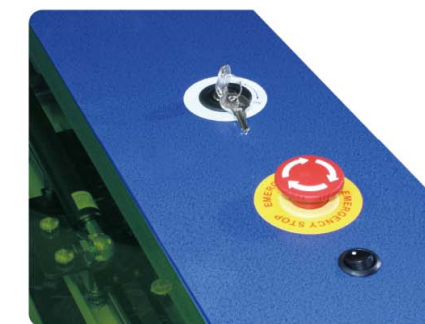


### SmartPIN AutoFocus (Patented)

The plug-and-play probe design makes focusing a one-touch process and provides the accuracy and precision required for optimum quality in the lasing process.

### Real Pointer Alignment Feature

Extra beam combiner to align red pointer with laser beam, What You See is What You Get.

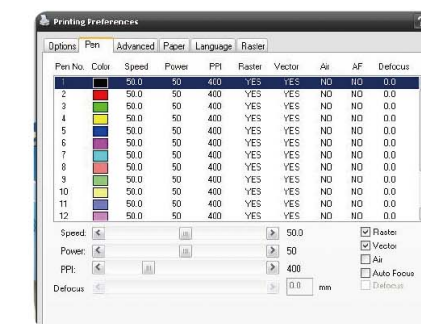


### Key Switch & Emergency Stop

Key switch safeguards the machine from unauthorized use. Prominent emergency button located on the top of the machine allows operators to stop the laser and the motion carriage immediately to provide a safe operating environment.

### SmartACT™ (Patented)

Ground-breaking technology that reduces the ramping process, the job running time, which translates into higher productivity.



### Innovative Software Features

Unbeatable print driver features SmartCENTER™, Defocus by pen, Programmable Air Assist Truelmage, Vector Path Optimization, allow easy set up and achieve marvelous output quality.